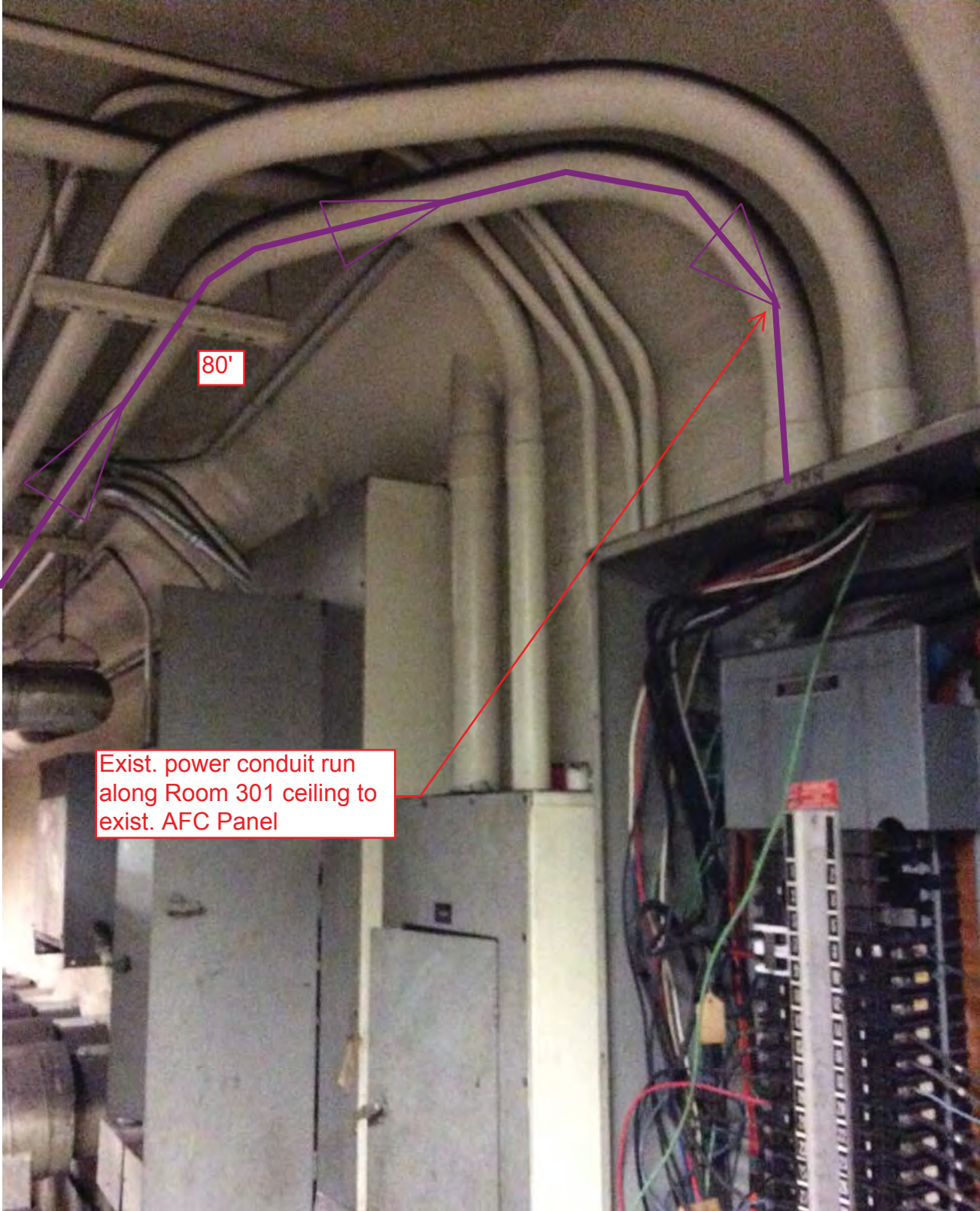


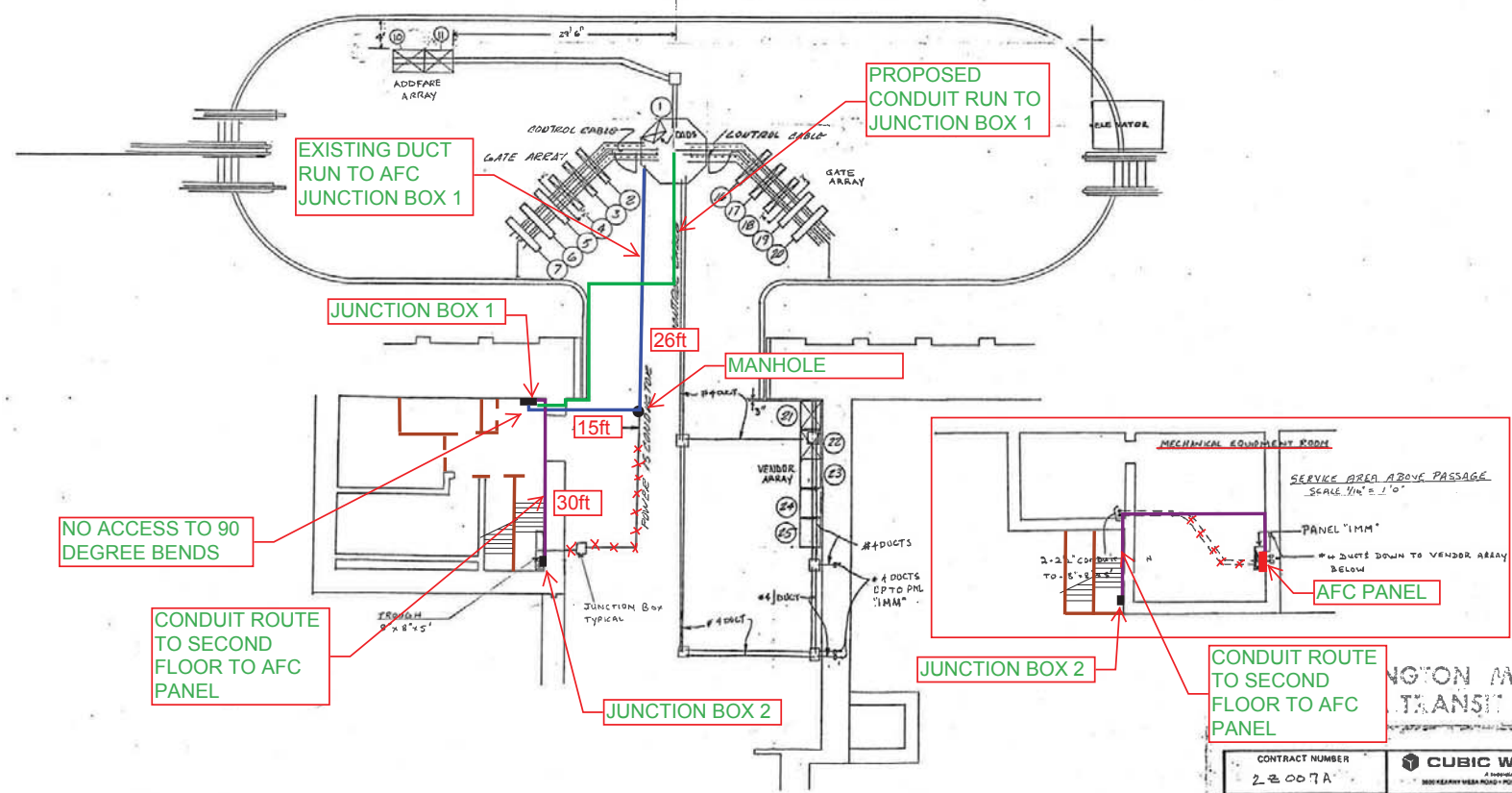
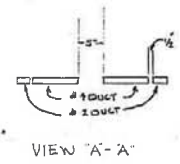
Picture 13: D07 Potomac Ave – Existing conduit into AFC Panel



8 7 6 5 4 3 2 1

REVISIONS		
DESCRIPTION	DATE	APVD
AS BUILT DRAWING REVISION A	7-13-71	[Signature]

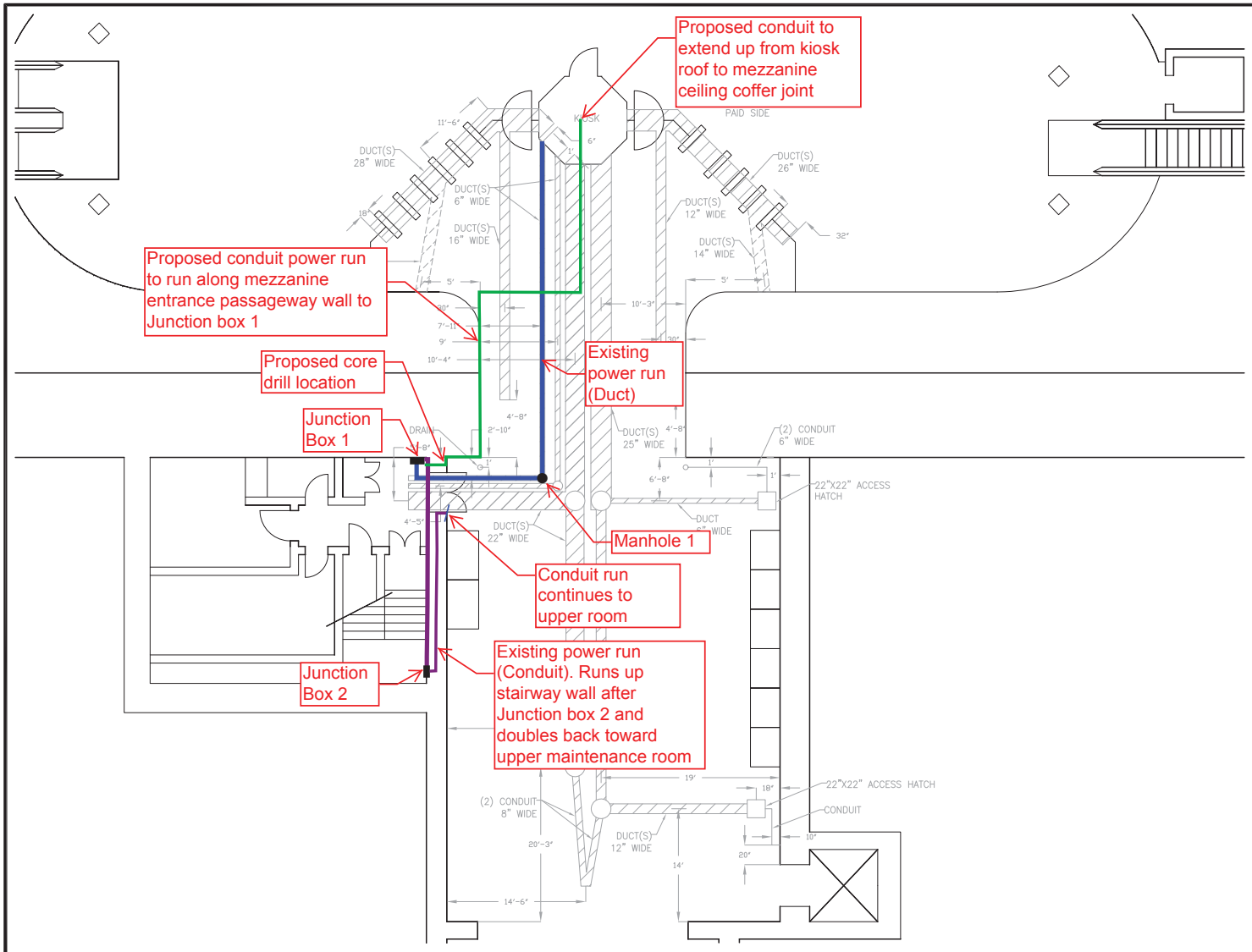
- NOTES:
- ALL INFORMATION CONCERNING DUCTS AND CONDUITS IS BASED ON INFORMATION SUPPLIED TO CUBIC - WESTERN DATA BY WHARF.
 - MACHINE INVENTORY IS DEPICTED ON THIS DWG.
 - THE MINIMUM OPERATIONAL MACHINE INVENTORY IS REFLECTED ON THIS DRAWING BY THE "X" DRAWN THROUGH THE MACHINE.
 - FOR AS BUILT CONDITIONS SEE SHEET 2.
 - FOR REFERENCE DRAWINGS USED SEE SUPPORT DOCUMENTATION PACKAGE FOR THIS MEZZANINE.



-1 INSTALLATION PLAN
(AS BUILT CONDITION)

INGTON METROPOLITAN
TRANSIT AUTHORITY

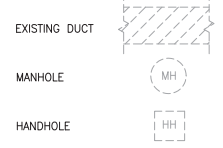
CONTRACT NUMBER 2-2-007A		CUBIC WESTERN DATA A DIVISION OF CALSON COMPANY 3801 KEARNEY WHEEL ROAD • PO BOX OFFICE BOX 1017 • SAN DIEGO, CA 92111	
POTOMAC AVE STATION		AFC MACHINES	
DESIGN ACTIVITY APPROVAL [Signature]	SIZE	DRAWING NUMBER 926-0390	REV [Signature]



PLAN NOTES:

1. DIMENSIONS ARE IN FEET AND INCHES.
2. DIMENSIONS ARE FOR REFERENCE ONLY.
3. EXISTING IN-FLOOR DUCTS/CONDUITS WERE IDENTIFIED USING A PORTABLE GPR SCANNING DEVICE.
4. THE SCANNING COVERAGE IS LIMITED TO THE MEZZANINE FLOOR ONLY.
5. GPR SCANNING HAS THE FOLLOWING LIMITATIONS: (i) 12 INCHES VISIBLE SCANNING DEPTH; (ii) VISIBILITY BEYOND CONGESTED OR NEAR SURFACE REINFORCEMENT LAYERS; (iii) DETECTION OF PVC AND OTHER NON-METALLIC OBJECTS; (iv) DETERMINATION OF SIZE AND EXTENTS OF SUBSURFACE ANOMALIES SUCH AS SLAB VOIDS OR REBAR SIZES; AND (v) VISIBILITY WHEN VARIABLE MOISTURE CONDITIONS EXIST IN THE SUBSTRATE.

LEGEND:



POTOMAC AVENUE STATION
SCALE: NOT TO SCALE

CONTRACT NO.
XXXXXX

DESIGNED	C. LOOSE	03-15	REFERENCE DRAWINGS		REVISIONS		
			NUMBER	DESCRIPTION	DATE	BY	DESCRIPTION
DRAWN	C. LOOSE	03-15					
CHECKED	M. BUTLER	03-15					
APPROVED							

WASHINGTON METROPOLITAN AREA TRANSIT AUTHORITY
DEPARTMENT OF TRANSIT INFRASTRUCTURE AND ENGINEERING SERVICES
OFFICE OF INFRASTRUCTURE RENEWAL PROGRAM

GFP a Geacnet Fleming/Parsons JOINT VENTURE

APPROVED _____ SUBMITTED _____ PROJECT MANAGER

15-NEPP-01
IN - FLOOR DUCT INSPECTIONS
D07 Potomac Avenue
PROPOSED POWER CONDUIT RUN

SCALE: NOT TO SCALE

DRAWING NO. **D07-E-100**

XXX